



# CLASS OF

# 2025

## Senior Handbook



**Hillsborough County**  
**PUBLIC SCHOOLS**  
Preparing Students for Life

# Table of Contents

Page	Topic
1-2	Graduation Requirements
3	ACT/SAT Test Comparison
4	SAT Dates and Information
5	ACT Dates and Information
6	ACT/SAT Test Prep
7	Bright Futures Requirements
8	Volunteer and Paid Work Hour Guidelines
9-10	Senior Checklist
11-12	Important Senior Terms
13	SSAR Information
14	FAFSA Information
15	State University System
16	Florida College System
17	Florida's Private Colleges and Universities
18	Career Research Information
19	Adult and Career Services
20-21	Hillsborough Technical Colleges
22	Hillsborough Community College
23	Scholarship Search Information
24	Websites to Know
25-28	NCAA Information
29	NAIA Information

## Academic Advisement

### Students Entering Grade 9 in 2023-2024 and Thereafter

#### What Students and Parents Need to Know

##### **What options lead to a standard diploma?**

Successful completion of one of the following options:

- 24 credits
- Advanced International Certificate of Education (AICE) curriculum
- International Baccalaureate (IB) curriculum
- 18-credit Academically Challenging Curriculum to Enhance Learning (ACCEL)
- Career and Technical Education (CTE) Pathway (See section [s.] [1003.4282](#), Florida Statutes [F.S.])

##### **What are the state assessment requirements?**

Students must pass the following statewide assessments:

- Grade 10 English Language Arts (ELA) or a concordant score
- Algebra 1 end-of-course (EOC) or a comparative score

A waiver of assessment results is granted by the Individual Educational Plan (IEP) team for students with disabilities. Additionally, students who have been enrolled in an English for Speakers of Other Languages (ESOL) program for less than two years may meet the requirement for grade 10 ELA by satisfactorily demonstrating grade level expectations of formative assessments.

Refer to [Graduation Requirements for Florida's Statewide Assessments](#) for concordant and comparative scores.

Students enrolled in the following courses must participate in the corresponding EOC assessment, which constitutes 30 percent of the final course grade\*:

- Algebra 1
- Geometry
- Biology
- U.S. History

\*Special note: Thirty percent not applicable if not enrolled in the course but passed the EOC (Credit Acceleration Program [CAP]). (See s. [1008.22](#), F.S.)

##### **What is the difference between the 18-credit ACCEL option and the 24-credit option?**

- 2.5 elective credits instead of 7.5
- Physical Education is not required

##### **What is the difference between the CTE Pathway option and the 24-credit option?**

- At least 18 credits are required
- 3.5 elective credits instead of 7.5
  - 2 credits in CTE courses, must result in a program completion and industry certification
  - 1.5 credits in work-based learning programs; Physical Education is not required
- Fine and Performing Arts, Speech and Debate, CTE or Practical Arts is not required

#### 24-Credit Standard Diploma Requirements

Available To All Students, Including Students With Disabilities

4 Credits ELA
<ul style="list-style-type: none"> <li>• ELA 1, 2, 3, 4</li> <li>• ELA honors, Advanced Placement (AP), AICE, IB and dual enrollment may satisfy this requirement</li> </ul>
4 Credits Mathematics*
<ul style="list-style-type: none"> <li>• One of which must be Algebra 1 and one of which must be Geometry</li> <li>• Industry Certifications that lead to college credit may substitute for up to two mathematics credits (except for Algebra 1 and Geometry) **</li> <li>• An identified computer science*** credit may substitute for up to one mathematics credit (except for Algebra 1 and Geometry)</li> </ul>
3 Credits Science*
<ul style="list-style-type: none"> <li>• One of which must be Biology, two of which must be equally rigorous science courses</li> <li>• Two of the three required course credits must have a laboratory component</li> <li>• Industry Certifications that lead to college credit may substitute for up to one science credit (except for Biology)**</li> <li>• An identified computer science*** credit may substitute for up to one science credit (except for Biology)</li> </ul>
3 Credits Social Studies
<ul style="list-style-type: none"> <li>• 1 credit in World History</li> <li>• 1 credit in U.S. History</li> <li>• 0.5 credit in U.S. Government</li> <li>• 0.5 credit in Economics</li> </ul>
0.5 Credit in Personal Financial Literacy****
1 Credit Fine and Performing Arts, Speech and Debate, Career and Technical Education, or Practical Arts*
1 Credit Physical Education*
<ul style="list-style-type: none"> <li>• To include the integration of health</li> </ul>
7.5 Elective Credits
<p><b>Students must earn a 2.0 unweighted grade-point average (GPA) on a 4.0 scale for all cohort years and pass statewide, standardized assessments.</b></p>

\*Eligible courses are specified in the [Florida Course Code Directory](#).

\*\*[Industry certifications](#) for which there is a statewide college credit articulation agreement approved by the State Board of Education may substitute for mathematics and science credit.

\*\*\*A computer science credit may not be used to substitute for both a mathematics and science credit.

\*\*\*\*This requirement was added for students entering grade nine 2023-2024 and thereafter.

# Academic Advisement

## Students Entering Grade 9 in 2023-2024 and Thereafter

### What Students and Parents Need to Know



#### Scholar Diploma Designation

In addition to the requirements of s. [1003.4282](#), F.S., a student must satisfy the following requirements:

- Earn 1 credit in Algebra 2 or an equally rigorous course
- Pass the Geometry EOC
- Earn 1 credit in Statistics or an equally rigorous mathematics course
- Pass the Biology 1 EOC++
- Earn 1 credit in Chemistry or Physics
- Earn 1 credit in a course equally rigorous to Chemistry or Physics
- Pass the U.S. History EOC++
- Earn 2 credits in the same World Language
- Earn at least 1 credit in an AP, IB, AICE or a dual enrollment course

**\*\*Special note:** A student is exempt from the Biology 1 or U.S. History EOC assessment if the student is enrolled in an AP, IB, or AICE Biology 1 or U.S. History course; takes the respective AP, IB or AICE assessment; and earns the minimum college credit.

#### Industry Scholar Diploma Designation

- Meet standard high school diploma requirements
- Attain one or more industry certifications from the list established (per s. 1003.492, F.S.)

#### What is CAP?

The CAP allows a student to earn high school credit if the student passes an AP examination, a College Level Examination Program (CLEP) or a statewide course assessment without enrollment in the course. The courses include:

- |             |                |
|-------------|----------------|
| • Algebra 1 | • Geometry     |
| • Biology   | • U.S. History |

#### What are the additional graduation options for students with disabilities?

Students, in collaboration with parents and the IEP team, may choose two additional standard diploma options available only to students with disabilities. Both allow students to substitute a CTE course with related content for one credit in ELA 4, mathematics, science and social studies (excluding Algebra 1, Geometry, Biology 1 and U.S. History). The two options are as follows:

- Students with a most significant cognitive disability may earn credits via access courses and be assessed via an alternate assessment.
- Students enrolled in the academic and employment option must earn at least 0.5 credit via paid employment in addition to meeting the standard diploma graduation requirements.

#### State University System

Admission into Florida's [State University System](#) (SUS) institutions is competitive. Prospective students should complete a rigorous course of study in high school and apply to more than one university to increase their chance for acceptance. To qualify to enter one of Florida's public universities, a first-time-in-college student must meet the following minimum requirements (credit earned by industry certification does not count for SUS admission):

- High school graduation with a standard diploma, a minimum of a 2.5 GPA and admission test scores meeting minimum college-ready test scores per Board of Governors (BOG) Regulation 6.008
- 16 credits of approved college preparatory academic courses per BOG Regulation 6.002
- 4 English (3 with substantial writing)
- 4 Mathematics (Algebra 1 level and higher)
- 3 Natural Science (2 with substantial lab)
- 3 Social Science
- 2 World Language (sequential, in the same language or other equivalents)
- 2 approved electives

#### Florida College System

The 28 colleges of the [Florida College System](#) serve more than 650,000 students. Colleges offer affordable and stackable workforce credentials including certificate programs, associate in science degrees and associate in arts degrees, which transfer to a bachelor's degree program. All colleges also offer workforce bachelor's degree programs in areas of high demand. All Florida College System institutions have open-door admissions for students who earned a standard high school diploma or an equivalent diploma, or earned college credit.

#### Career and Technical Colleges and Centers

Florida also offers students 49 accredited career and technical colleges or centers throughout the state, which provide the education and certification necessary to work in a particular career or technical field. Programs are flexible for students and provide industry-specific education and training for a wide variety of occupations.

[Career, Adult and Technical Education District Postsecondary Institutions](#)

#### Where is information on financial aid located?

The Florida Department of Education's Office of Student Financial Assistance administers a variety of postsecondary educational state-funded grants and scholarships.

[Office of Student Financial Assistance](#)

For more detailed information on Graduation Requirements visit the Florida Department of Education's webpage at <https://www.fldoe.org/schools/k-12-public-schools/sss/graduation-requirements/>.

# TEST COMPARISON

SAT	ACT
Cost: \$68 Late registration: Additional \$30.00	Cost: \$68 (including essay: \$93.00) Late registration: Additional \$38.00
General Information: <ul style="list-style-type: none"> <li>Non-multiple choice answers included</li> <li>No guessing penalty</li> <li>Testing time - 3 hours, 3 hours &amp; 50 minutes with essay</li> </ul>	General Information: <ul style="list-style-type: none"> <li>Entirely multiple choice</li> <li>No guessing penalty</li> <li>Testing time - 2 hours &amp; 55 minutes, 3 hours &amp; 40 minutes with essay</li> </ul>
Test Contents: EVIDENCE-BASED READING & WRITING <ul style="list-style-type: none"> <li>Reading Test</li> <li>Writing &amp; Language Test</li> </ul> MATHEMATICS <ul style="list-style-type: none"> <li>Problem Solving &amp; Data Analysis- Focuses on quantitative literacy</li> <li>Heart of Algebra – Focuses on the mastery of linear functions and systems</li> <li>Passport to Advanced Math – Questions require the manipulation and answering of complex equations</li> <li>Additional Topics in Math – Geometric and trigonometric skills most relevant to college and career readiness</li> </ul>	Test Contents: ENGLISH <ul style="list-style-type: none"> <li>Production of writing, knowledge of language, and conventions of standard English</li> </ul> MATHEMATICS <ul style="list-style-type: none"> <li>Number &amp; quantity, algebra, functions, geometry, and statistics &amp; probability</li> </ul> READING <ul style="list-style-type: none"> <li>Key ideas &amp; details, craft &amp; structure, and integration of knowledge &amp; ideas</li> </ul> SCIENCE <ul style="list-style-type: none"> <li>Interpretation of data, scientific investigation, and evaluation of models, inferences, &amp; experimental results</li> </ul> WRITING (optional) <ul style="list-style-type: none"> <li>Writing skills</li> </ul> **A student's scores on the Writing Test have no effect on the score of any ACT Assessment Test or the Composite score.
Scoring: Evidence-Based Reading/Writing 200 – 800 Math 200 – 800 Maximum Score 1600	Scoring: English 1 – 36 Mathematics 1 – 36 Reading 1 – 36 Science 1 – 36 Composite (average of E, M, R, & S tests)/Maximum Score 1 – 36 Writing (optional) Writing sub score 2 – 12 STEM score: 1-36 ELA score: 1-36

# SAT DATES 2024-2025

## For College Admissions/Scholarships

SAT REGISTRATION  
Online: [www.collegeboard.org](http://www.collegeboard.org)

SAT: \$68.00  
Additional \$30 for late registration

**Photo ID and admission ticket required on test day.** Test locations/dates subject to change.

SCHOOL	TEST CENTER CODE	SAT/ACT HIGH SCHOOL (CEEB) CODES
Alonso	10696	101714
Armwood	10610	101596
Blake	10653	101750
Bloomingdale	10706	101778
Brandon	10140	100150
Chamberlain	10660	101692
Durant	10561	101423
East Bay	10269	101880
Freedom	10659	101771
Gaither	10663	101738
Hillsborough	10668	101705
Jefferson	10671	101710
King	10666	101717
Lennard	10695	102061
Leto	10672	101718
Middleton	10988	101765
Newsome	10699	100957
Plant	10670	101700
Plant City	10560	101420
Riverview	10581	101528
Robinson	10675	101728
Sickles	10667	101752
Spoto	10693	102059
Steinbrenner	10236	102192
Strawberry Crest	10647	102193
Sumner	10261	102538
Tampa Bay Tech	10679	101732
Wharton	10673	101751

**Students who qualify for free or reduced lunch are eligible for fee waivers. Visit your school counseling department for more information.**

*Students who require non-Saturday testing for approved reasons should visit the College Board website for information about the registration process.*

### Florida Student Scholarship & Grant Programs

Florida Academic Scholars (FAS): 1330 Total Score

Florida Medallion Scholars (FMS): 1210 Total Score

Florida Gold Seal Vocational & CAPE Scholars Awards (GSV/CAPE)  
Reading test: 24, Writing & Language Test 25, Math 24

TEST DATES & LOCATIONS		
August 24, 2024 (Registration Deadline 8/9/24)		
Bloomingdale	Chamberlain	Durant
East Bay	Freedom	Hillsborough
Lennard	Leto	Middleton
Newsome	Plant	Plant City
Riverview	Robinson	Sickles
Steinbrenner	Strawberry Crest	Sumner
Tampa Bay Tech	Wharton	Alonso
October 5, 2024 (Registration Deadline 9/20/24)		
Armwood	Bloomingdale	Brandon
Chamberlain	East Bay	Freedom
Hillsborough	Lennard	Leto
Middleton	Newsome	Plant
Plant City	Riverview	Robinson
Sickles	Steinbrenner	Strawberry Crest
Strawberry Crest	Tampa Bay Tech	Wharton
Alonso		
November 2, 2024 (Registration Deadline 10/18/24)		
Armwood	Brandon	Chamberlain
Hillsborough	Leto	Middleton
Plant	Riverview	Robinson
Tampa Bay Tech		
December 7, 2024 (Registration Deadline 11/22/24)		
Armwood	Brandon	Chamberlain
Hillsborough	Leto	Middleton
Plant	Riverview	Robinson
Tampa Bay Tech		
March 8, 2025 (Registration Deadline 2/21/25)		
Brandon	Chamberlain	Hillsborough
Leto	Middleton	Plant
Riverview	Robinson	Tampa Bay Tech
May 3, 2025 (Registration Deadline 4/18/25)		
Armwood	Brandon	Hillsborough
Leto	Middleton	Plant
Riverview	Robinson	Tampa Bay Tech
June 7, 2025 (Registration Deadline 5/22/2025)		
Armwood	Brandon	Chamberlain
Hillsborough	Leto	Middleton
Plant	Riverview	Robinson
Tampa Bay Tech		

# ACT DATES 2024-2025



## For College Admissions & Scholarships

ACT REGISTRATION  
Online: [www.actstudent.org](https://www.actstudent.org)

Cost: \$68.00 No Writing  
\$93.00 Plus Writing  
Additional \$38 for late registration

### Photo ID and admission ticket required on test day.

Test locations/dates subject to change. For current information about your test center, see link:  
<https://www.act.org/content/act/en/products-and-services/the-act/registration/test-center-locator.html>

SCHOOL	TEST CENTER CODE	SAT/ACT HIGH SCHOOL (CEEBS) CODES
Alonso	212060	101714
Armwood	208290	101596
Blake	207010	101750
Bloomingtondale	164980	101778
Brandon	196770	100150
Chamberlain	186500	101692
Durant	207190	101423
East Bay	207290	101880
Freedom	213170	101771
Gaither	154740	101738
Hillsborough	206490	101705
Jefferson	207560	101710
King	207300	101717
Lennard	233630	102061
Leto	207040	101718
Middleton	213490	101765
Newsome	218890	100957
Plant	197470	101700
Plant City	209110	101420
Riverview	206950	101528
Robinson	201400	101728
Sickles	206820	101752
Spoto	228480	102059
Steinbrenner	232770	102192
Strawberry Crest	231080	102193
Sumner	251150	102538
Tampa Bay Tech	206920	101732
Wharton	207980	101751

**Students who qualify for free or reduced lunch are eligible for fee waivers. Visit your school counseling department for more information.**

**Students who require non-Saturday testing for approved reasons may request this during the online registration process. Visit ACT's website for more information.**

## Florida Student Scholarship & Grant Programs

**Florida Academic Scholars (FAS):** 29 ACT Composite Score **Florida**

**Medallion Scholars (FMS):** 25 ACT Composite Score

**Florida Gold Seal Vocational & CAPE Scholars Awards (GSV/CAPE):** 17 English/18 Reading/19 Math

TEST DATES & LOCATIONS		
September 14, 2024 (Registration Deadline 8/9/24)		
Alonso	Freedom	Riverview
Armwood	Gaither	Spoto
Bloomingtondale	Hillsborough	Steinbrenner
Brandon	Leto	Sumner
Chamberlain	Newsome	Tampa Bay Tech
Durant	Plant	
East Bay	Plant City	
October 26, 2024 (Registration Deadline 9/20/24)		
Alonso	Freedom	Plant City
Armwood	Gaither	Riverview
Bloomingtondale	Hillsborough	Spoto
Brandon	Leto	Sumner
Chamberlain	Middleton	Tampa Bay Tech
Durant	Newsome	
East Bay	Plant	
December 14, 2024 (Registration Deadline 11/8/24)		
Alonso	Freedom	Plant
Armwood	Gaither	Plant City
Bloomingtondale	Hillsborough	Riverview
Brandon	Leto	Spoto
Chamberlain	Middleton	Sumner
Durant	Newsome	Tampa Bay Tech
East Bay		
February 8, 2025 (Registration Deadline 1/3/25)		
Alonso	East Bay	Plant
Armwood	Freedom	Plant City
Bloomingtondale	Gaither	Spoto
Brandon	Hillsborough	Steinbrenner
Chamberlain	Leto	Sumner
Durant	Newsome	Tampa Bay Tech
April 5, 2025 (Registration Deadline 2/28/25)		
Alonso	Gaither	Plant City
Armwood	Hillsborough	Riverview
Bloomingtondale	Leto	Spoto
Brandon	Middleton	Steinbrenner
Chamberlain	Newsome	Sumner
East Bay	Plant	Tampa Bay Tech
Freedom		
June 14, 2025 (Registration Deadline 5/9/25)		
Alonso	East Bay	Newsome
Armwood	Freedom	Plant
Bloomingtondale	Gaither	Riverview
Brandon	Hillsborough	Spoto
Chamberlain	Leto	Steinbrenner
Durant	Middleton	Sumner
July 12, 2025 (Registration Deadline 6/6/25)		
Armwood	Durant	Leto
Bloomingtondale	East Bay	Middleton
Brandon	Gaither	Spoto
Chamberlain	Hillsborough	Sumner

For additional information visit [www.floridastudentfinancialaidsg.org](http://www.floridastudentfinancialaidsg.org).



# ACT/SAT TEST PREP

## Check out Khan Academy for SAT prep. Practice is the key to success!

Take full length practice tests, brush up on specific skills with short lessons, and get test taking tips and strategies.

## Link Your Collegeboard Account to Khan Academy for personalized SAT Practice

<http://www.satpractice.org>

## Resource Websites:

- CollegeBoard- [www.collegeboard.org](http://www.collegeboard.org)  
(View your PSAT score report and evaluate strengths/weaknesses)
- ACT Academy (free)-  
[Academy.act.org](http://Academy.act.org)
- ACT Online Prep-  
[www.actonlineprep.org](http://www.actonlineprep.org)
- Free online test prep-  
[www.number2.com](http://www.number2.com)
- SAT vs. ACT –  
[www.kaptest.com/sat/sat-vs-act](http://www.kaptest.com/sat/sat-vs-act)
- Free SAT Practice -  
[www.kaptest.com/sat/free/sat-practice](http://www.kaptest.com/sat/free/sat-practice)
- Free ACT Practice -  
[www.kaptest.com/act/free/act-practice](http://www.kaptest.com/act/free/act-practice)

Prepare for the New SAT<sup>®</sup> with

# Official SAT Practice

CollegeBoard + KHANACADEMY

Get personalized practice recommendations based on your PSAT/NMSQT<sup>®</sup> or PSAT<sup>®</sup> 8/9 results.

Take these steps to link your College Board and Khan Academy<sup>®</sup> accounts.

- 1**  
**Visit [satpractice.org](http://satpractice.org)**  
This takes you to Khan Academy, where you should log in or create an account.
- 2**  
**Link Your Accounts**  
When prompted, agree to link your Khan Academy and College Board accounts.
- 3**  
**Send Your Test Results**  
At College Board, sign in or create an account and hit "Send" to send your test results to Khan Academy.

Sign up. Link up.  
Get practicing.  
**[satpractice.org](http://satpractice.org)**

© 2014 The College Board. PSAT/NMSQT is a registered trademark of the College Board and National Merit Scholarship Corporation. Khan Academy is a registered trademark of the United States and other jurisdictions. PSAT/8/9



**Florida Bright Futures Scholarship Program**  
**Florida Academic Scholars (FAS) / Florida Medallion Scholars (FMS)**  
**2024-25**

**Initial Eligibility Requirements:** (As determined by the Florida Department of Education)

1. Submit the [Florida Financial Aid Application \(FFAA\)](#) no later than August 31 after high school graduation.
2. Graduate from a Florida high school with a standard high school diploma or its equivalent.
3. Complete the 16 college-preparatory courses required for admission to a state university.
4. Achieve the required weighted GPA in the 16 college-preparatory courses per the chart below.
5. Achieve the required composite ACT® score, Overall Score on the Classic Learning Test (CLT), or combined SAT® score. Tests are accepted through August 31 of the student's graduation year (or through January 31 for mid-year graduates), per the chart below.
6. Complete the required number of volunteer service hours, paid work hours, or 100 total combined hours per the chart below.

Type	16 High School College-Preparatory Course Credits <sup>1</sup>	High School Weighted Bright Futures GPA	College Entrance Exams by High School Graduation Year (ACT®/CLT®/SAT®)	Volunteer Service Hours <sup>2</sup>	Paid Work Hours <sup>2</sup>
<b>FAS</b>	4 - English (three must include substantial writing)  4 - Mathematics (at or above the Algebra I level)  3 - Natural Science (two must have substantial laboratory)	3.50	2024-25 Graduates: 29/96/1340  2025-26 Graduates: 29/95/1330	100 hours	100 hours
<b>FMS</b>	3 - Social Science  2 - World Language (sequential, in same language)	3.00	2024-25 Graduates: 25/84/1210  2025-26 Graduates: 24/82/1190	75 hours	100 hours

<sup>1</sup> The required coursework aligns with the State University System admission requirements found in Florida Board of Governor's Regulation 6.002. Additional information regarding high school coursework can be found within the [Florida Counseling for Future Education Handbook](#).

<sup>2</sup> Students must earn the required volunteer service hours, 100 paid work hours, or a combination that totals a minimum of 100 hours.

**Requirements to Receive an Award:** (As determined by the postsecondary institution)

1. Be evaluated by the Office of Student Financial Assistance (OSFA) as meeting initial eligibility requirements.
2. Be a Florida resident and U.S. citizen or eligible noncitizen.
3. Enroll as a degree- or certificate-seeking student at a Florida institution in at least 6 non-remedial semester credit hours.

**Renewal Requirements:** (As determined by grade and hours submitted by the postsecondary institution)

1. Students must earn the number of credit hours based on the student's enrollment type per term.
2. The renewal cumulative GPA requirements are outlined in the table below.

	Florida Academic Scholars (FAS)	Florida Medallion Scholars (FMS)
<b>Minimum Cumulative GPA</b> (unrounded and unweighted)	3.0	2.75

For detailed information, including other ways to qualify, please refer to the [Bright Futures Student Handbook](#).

**Eligibility requirements are subject to change with each legislative session.**

Students are responsible for tracking their application and award status online and ensuring that funding for an academic year is accurate by contacting their institution's financial aid office.

# Volunteer Service and Paid Work Guidelines

## Bright Futures – Florida Academic Scholars Award, Florida Medallion Award, Gold Seal Vocational Award

*The student must complete a program of volunteer service or, beginning with a high school student graduating in the 2022-2023 academic year and thereafter, paid work, as approved by the district school board, the administrators of a non-public school, or the Department of Education for home education program students, which must include 100 hours of volunteer service, paid work, or a combination of both. Eligible paid work completed on or after **June 27th, 2022**, shall be included in the student's total of paid work hours. The student may identify a social or civic issue or a professional area that interests him or her and develop a plan for his or personal involvement in addressing the issue or learning about the area. The student must, through papers or other presentations, evaluate and reflect upon his or her volunteer service or paid work experience. (Florida Statute 1009.534)*

Volunteer Service or Paid Work may include, but is not limited to, a business or governmental internship, work for a nonprofit community service organization, or activities on behalf of a candidate for public office. These hours will meet the requirement for the Florida Bright Futures Award Program. Students must satisfy the hours requirement by either completing all volunteer hours, completing all 100 paid work hours, or completing 100 combined volunteer and paid work hours.

Scholarship	Volunteer Hours	OR*	Paid Work Hours	OR*	Combination of Volunteer or Paid Work Hours*
Florida Academic Scholarship (FAS)	100	OR*	100	OR*	100
Florida Medallion Scholarship (FMS)	75	OR*	100	OR*	100
Florida Gold Seal Vocational Scholarship (GSV)	30	OR*	100	OR*	100
Florida Gold Seal CAPE Scholarship (GSC)	30	OR*	100	OR*	100

*\*Volunteer service hours may be combined with paid work hours to reach a total of 100 at each level (FAS, FMS, GSV, GSC)*

**How to document volunteer hours:** Volunteer service hours must be submitted on the proper district form and submitted to the school counseling office at your school.

**How to document paid work hours:** Paid work hours must be submitted on the proper district form and submitted to the school counseling office at your school. A copy of a pay stub may be submitted in lieu of a signature and must be attached to the paid work hours documentation form.

### Hours That Are Not Acceptable

- Court mandated community/volunteer service.
- An activity where there is no leader or responsible adult on site to evaluate and confirm student performance.
- Donations (ex. blood, Locks of Love, canned food)
- Hours submitted after graduation.
- Fostering of animals
- Hours performed overnight at camps or designated events (exception Relay for Life).
- Volunteer or paid work hours earned prior to the completion of 8th grade.

### Other General Guidelines

- Any volunteer service hours submitted or approved after the graduation date, even if earned *prior* to graduation will not be accepted. **No Exceptions.**
- Only paid work hours earned **beginning June 27th, 2022** and thereafter will be accepted.
- Students must perform the volunteer service during non-school hours.
- A parent/guardian cannot represent as a service agency or work contact.
- Volunteer Service/Paid Work hours will be capped at eight hours per day.



# Senior Checklist

## August

- ✓ Complete college research & make a final list of four or more to which you plan to apply (resources available on Xello).
- ✓ Gather college application information.
- ✓ Determine application options (early decision, early action, or regular decision).
- ✓ Begin essays for college applications.
- ✓ Register for SAT, ACT, and/or SAT subject tests as applicable; be aware of registration deadlines!
- ✓ Meet with college representatives who are visiting your school.
- ✓ Apply for applicable scholarships.
- ✓ Submit any volunteer service or paid work hours completed over the summer.
- ✓ Start to explore scholarship opportunities via Xello.

## September

- ✓ Pick up the State University System College Admissions Requirement Matrix (SUS) from your counselor.
  - ✓ View Scholarship Matrix on district website and explore more scholarship opportunities via Xello.
  - ✓ Gather letters of recommendations.
  - ✓ Continue to work on essays for college applications.
  - ✓ Register for SAT, ACT, and/or SAT subject tests as applicable; be aware of registration deadlines!
  - ✓ Meet with college representatives who are visiting your school or attend college fairs.
  - ✓ Apply for applicable scholarships.
  - ✓ Work on completing college applications (resources available via Xello).
  - ✓ Check with your school counselor or JROTC regarding the ASVAB exam date at your school if you are interested in the military or want to take a career interest inventory test.
  - ✓ Continue to submit volunteer service and paid work hours logs.
  - ✓ Attend district hosted college fairs.
- 

## October

- ✓ Complete your SSAR – if required by college/university.
- ✓ Meet with college representatives who are visiting your school.
- ✓ View Scholarship Matrix on district website and explore more scholarship opportunities via Xello.
- ✓ Apply for applicable scholarships.
- ✓ Continue completing college applications (resources available via Xello).
- ✓ Continue to submit volunteer service and paid work hours logs.
- ✓ Register for SAT, ACT, and/or SAT subject tests as applicable; be aware of registration deadlines!
- ✓ Apply for Florida Financial Aid (Bright Futures) at [www.floridastudentfinancialaidsg.org/home/ApplyHere](http://www.floridastudentfinancialaidsg.org/home/ApplyHere)
- ✓ Explore financial aid and FAFSA resources at [www.fafsa.gov](http://www.fafsa.gov)

## November

- ✓ Meet with college representatives who are visiting your school.
- ✓ View Scholarship Matrix on district website and explore more scholarship opportunities via Xello.
- ✓ Apply for applicable scholarships.
- ✓ Continue completing college applications (resources available via Xello).
- ✓ Continue to submit volunteer service and paid work hours logs.
- ✓ Register for SAT, ACT, and/or SAT subject tests as applicable; be aware of registration deadlines!
- ✓ Apply for Hillsborough Education Foundation Scholarships.

# Senior Checklist Continued

## December

- ✓ Register for SAT, ACT, and/or SAT subject tests as applicable; be aware of registration deadlines!
- ✓ Complete & submit college application materials
- ✓ View Scholarship Matrix on district website and explore more scholarship opportunities via Xello.
- ✓ Apply for applicable scholarships
- ✓ Continue to submit volunteer service and paid work hours logs.

## January

- ✓ Attend Hillsborough Technical Colleges info sessions and complete applications – if interested.
- ✓ Register for SAT, ACT, and/or SAT subject tests as applicable; be aware of registration deadlines!
- ✓ Complete & submit college application materials (resources available via Xello).
- ✓ View Scholarship Matrix on district website and explore more scholarship opportunities via Xello.
- ✓ Apply for applicable scholarships.
- ✓ Continue to submit volunteer service and paid work hours logs.

## February/March

- ✓ Attend NACAC College Fairs.
- ✓ Check the status of your financial aid awards by accessing your online college accounts
- ✓ If needed contact the college's financial aid offices to determine if additional financial aid documents are required.
- ✓ Update the FAFSA with new tax information if needed.
- ✓ Apply for housing and pay deposits as applicable (dates may vary).
- ✓ Schedule college orientation sessions (dates may vary).
- ✓ Register for SAT or ACT, if scores still needed for Bright Futures, etc.; be aware of registration deadlines!
- ✓ View Scholarship Matrix on district website and explore more scholarship opportunities via Xello.
- ✓ Apply for applicable scholarships.
- ✓ Continue to submit volunteer service and paid work hours logs.
- ✓ Update SSAR to include any semester 1 grades/test scores.

## April

- ✓ Check the status of your financial aid awards by accessing your online college accounts.
- ✓ Schedule college orientation sessions (dates may vary).
- ✓ Register for SAT or ACT, if scores still needed for Bright Futures, etc.; be aware of registration deadlines!
- ✓ View Scholarship Matrix on district website and explore more scholarship opportunities via Xello.
- ✓ Apply for applicable scholarships.
- ✓ Continue to submit volunteer service and paid work hours logs.

## May

- ✓ Commit to the college that you will attend and pay deposits as applicable.
- ✓ Return your college's financial aid award letter indicating the awards you are accepting and declining.
- ✓ Attend college orientation sessions (dates may vary).
- ✓ Submit all final volunteer service and paid work hours logs **before** graduation.
- ✓ View Scholarship Matrix on district website and explore more scholarship opportunities via Xello.
- ✓ Update Bright Futures application with the final college selection if needed.
- ✓ Register for SAT or ACT, if scores still needed for Bright Futures, etc.; be aware of registration deadlines!

## June/July

- ✓ Attend college orientation sessions (dates may vary).
- ✓ Explore more scholarship opportunities via Xello.
- ✓ Request dual enrollment transcripts from HCC and/or AP scores from CollegeBoard to be sent to the college you will attend.
- ✓ Continue to monitor Bright Futures award status.
- ✓ Register for SAT or ACT in JUNE, if scores still needed for Bright Futures, etc.; be aware of registration deadlines!

# IMPORTANT COLLEGE TERMS

**ACCREDITATION:** Recognition of a college or university by any of the regional or national accrediting bodies, indicating that the institution as a whole has been judged to be meeting its objectives.

**CANDIDATES REPLY DATE:** A policy among subscribing institutions that permits students to wait until May 1<sup>st</sup> to choose, without penalty, among offers of admissions/financial aid. (This does not include candidates accepted under the Early Decision plan.)

**COALITION APPLICATION** A standard application that is accepted by 140 colleges and universities. Some schools will accept the Coalition application in addition to current applications, while other schools will require all students to use the Coalition application.

**COMMON APPLICATION:** A standard application form that is accepted by about 500 colleges in lieu of their own form. Available at [www.commonapp.org](http://www.commonapp.org). If you are applying to a college that requires the Common Application, you must use this form in order to send transcripts and recs electronically.

**CSS/FINANCIAL AID PROFILE:** A financial aid form produced by the College Board that is required for students seeking aid at approximately 10% of the nation's universities (including most highly selective institutions). Check colleges' websites for requirement information. Available at [www.collegeboard.org](http://www.collegeboard.org).

**DEFERRED ADMISSIONS:** The practice of some colleges allowing an accepted student to postpone enrollment for one year.

**DEFERRED DECISION:** The practice of some colleges of holding an applicant's record to review again with the next applicant pool. A student who is deferred is neither accepted nor rejected. Most schools require 1<sup>st</sup> semester senior year grades and allow additional recommendations in the 2<sup>nd</sup> evaluation. Students should contact the admissions office to discuss ways to enhance the application and what should be submitted.

**DEMONSTRATED NEED:** The difference between the Expected Family Contribution and the total cost of attendance at a particular institution.

**EARLY ACTION:** An application process that permits students to submit an application to an institution of preference early in the senior year and receive a decision well in advance of the normal response dates in the spring. The candidate is NOT committed to enroll at that institution.

**EARLY ADMISSION:** Admitting students of superior ability into college courses and programs before they have completed their high school diploma. This type of application must be filed in the junior year.

**EARLY DECISION:** An application process in which a commitment is made by a student to the institution that, if admitted, the student WILL enroll. Only a student who can make a deliberate and well-reasoned first choice decision should apply early decision.

**FAFSA (FREE APPLICATION FOR FEDERAL STUDENT AID):** The financial aid form produced by the federal government that is required for nearly all colleges. Students and parents should fill out the form starting October 1<sup>st</sup> at [www.fafsa.gov](http://www.fafsa.gov).

**HONORS PROGRAM:** Any program offering an opportunity for superior students to enrich their educational experience through independent, advanced, or accelerated study.

# IMPORTANT COLLEGE TERMS

**MODIFIED ROLLING ADMISSIONS:** The practice of institutions reviewing applicant pools several times throughout the year. The school will post several deadlines and the dates in which those applications will be reviewed

**NCAA INITIAL ELIGIBILITY CERTIFICATION:** In order to participate in intercollegiate sports at NCAA Div. I, II, or III colleges, student-athletes must submit their high school transcript and ACT/SAT scores to the NCAA Initial Eligibility Clearinghouse. When registering for either test, students should enter “9999” as one of their college choices to have test scores sent to the Clearinghouse.

**NEED BLIND ADMISSIONS:** The term that applies to colleges that make decisions without regard to the financial circumstances of the applicants. Colleges with need-blind admissions do not necessarily offer aid to meet the full need of all accepted applicants.

**OPEN ADMISSIONS:** The policy of some colleges of admitting virtually all high school graduates, regardless of academic qualifications such as high school grades and admission test scores. Often only a high school diploma is required. (Community Colleges generally fall under an open admissions classification.)

**ROLLING ADMISSIONS:** An admissions procedure by which the college considers each application as soon as required materials have been received. The college then notifies each applicant of acceptance or rejection as soon as possible.

**SAT SUBJECT TESTS:** One-hour tests available in 18 subjects. These tests are required by the most selective colleges. Check the admissions page of the colleges’ websites. Typically, colleges recommend sending 2-3 subject test scores. For a complete list of subject tests offered and to register, visit [www.collegeboard.org](http://www.collegeboard.org). Students are encouraged to take their “best” subjects to show the college their strengths.

**SELF-HELP AID:** The portion of a financial aid package consisting of loans and wages from a work-study job.

**SAR (STUDENT AID REPORT):** A form sent to families in response to submission of the Free Application for Federal Student Aid that includes the Expected Family Contribution, a figure that may be modified at colleges that use institutional methodology.

**TEST OPTIONAL:** A term used by institutions that means it is not mandatory for students to submit their SAT and/or ACT scores as a part of their application.

**WAITLIST:** A term used by institutions to describe a process by which they may initially delay offering or denying admissions during the regular decision pool. These students may be considered if space is available after admitted students have indicated whether or not they will attend.



# **SELF-REPORTING COURSEWORK (SSAR)**

SSAR is a student self-reported academic record that lists the classes and associated grades that have been attempted, or will be attempted, for high school and/or college credit. It replaces the high school and college transcripts used by a few college admissions offices (ex. UF, FSU, FAU) during the initial review process. Official transcripts will only be requested and sent AFTER graduation to validate what is entered on the SSAR. Please research which colleges on your list require you to submit a SSAR and which require an official transcript. Since accuracy is critical, you are advised to have a copy of your high school summary sheet (unofficial transcript) available to use as a reference when filling out the SSAR.

**Start your SSAR here: <https://ssar.selfreportedtranscript.com/login.aspx>**

## **Tips:**

- District GPA = Weighted GPA
- HCPS does an exact rank, not a percentile  
[example: 175 (your rank) /592 (total number of seniors)]
- You should list the high school you are graduating from and all of the courses listed on your summary sheet regardless of how many different schools you attended.
- All senior year courses must be included and listed as “in progress.” If you are unsure of what courses you will be taking second semester, provide your best estimate and update the SSAR if anything changes. If your schedule changes, you must immediately update your SSAR. To make changes to the SSAR, simply log in to the SSAR website with the email address and password used to create your original SSAR.
- Every course listed on your summary sheet must be entered in the SSAR (including middle school, online, dual enrollment, etc.) This also applies to any courses of these types that the student is taking in their senior year.
- Most of the grades on your summary sheet are semester grades. If there is a course that is a single grade for one credit, enter that grade twice (once for first semester and once for second semester). This also applies to dual enrollment courses that were awarded a full high school (1.0) credit.
- Summer courses: You will record the course and grade in the preceding school year. For example, if you took a course between the 9th and 10th grades, you would enter the course in the 9th grade.
- If you are unsure of what subject area a course falls into, please reach out to the admissions office of your college(s).
- **After you complete and submit your SSAR on the SSAR website, you are NOT DONE. It must be individually linked through the application status check portal at each respective college that requires it.**

*Some of these tips were copied from the SSAR FAQ sections of UF and FSU's websites. Please visit these websites for how-to videos and the most up to date information.*



# **FINANCIAL AID (FAFSA)**

The **Free Application for Federal Student Aid (FAFSA)** is the financial aid form you will need to complete with your parent(s) in order to apply for student grants (i.e. Pell Grant), work-study, and loans for college tuition. Also, some colleges require students to complete the FAFSA to be considered for their institutional scholarships.

## **Everyone is encouraged to apply for financial aid.**

Income and assets are not the only factors reviewed for eligibility. Family size, number of children in college, and cost of college are also important factors.

**Apply online at [www.fafsa.gov](http://www.fafsa.gov) when the application opens on December 1<sup>st</sup>, 2024.**

If you plan to start college in the fall, complete the 2025-2026 FAFSA.

If you plan to start college in the summer, complete the 2024-2025 FAFSA and the 2025-2026 FAFSA.

## **Before you apply:**

**Parents:** Gather your income tax return information for the 2023 year. Much of the information asked will be the same. You do NOT have to file your income tax return before you fill out the FAFSA. There is a required IRS Data Retrieval Tool (DRT) that you must complete prior to submitting the FAFSA.

**Get an FSA ID:** The FSA ID serves as your electronic signature. Both the student **AND** the parent need to apply for an ID. You will each have a separate ID. To get the ID, fill out a brief application at <https://studentaid.gov/fsa-id/create-account/launch>. Parent(s) and student can create an ID on this site that you will use to sign the FAFSA application. You will use this same ID each year you complete the FAFSA. **SAVE THESE LOGINS!**

## **Timeline:**

FAFSA will open on December 1<sup>st</sup>, 2024 and our state deadline is typically mid-May. However, you should submit your FAFSA as soon as possible because college and private aid deadlines may be much earlier than state deadlines. Some colleges will require you to submit an additional financial aid form (such as CSS/Financial Aid Profile). Check your college's website for requirements and the form is available at [cssprofile.collegeboard.org](http://cssprofile.collegeboard.org).

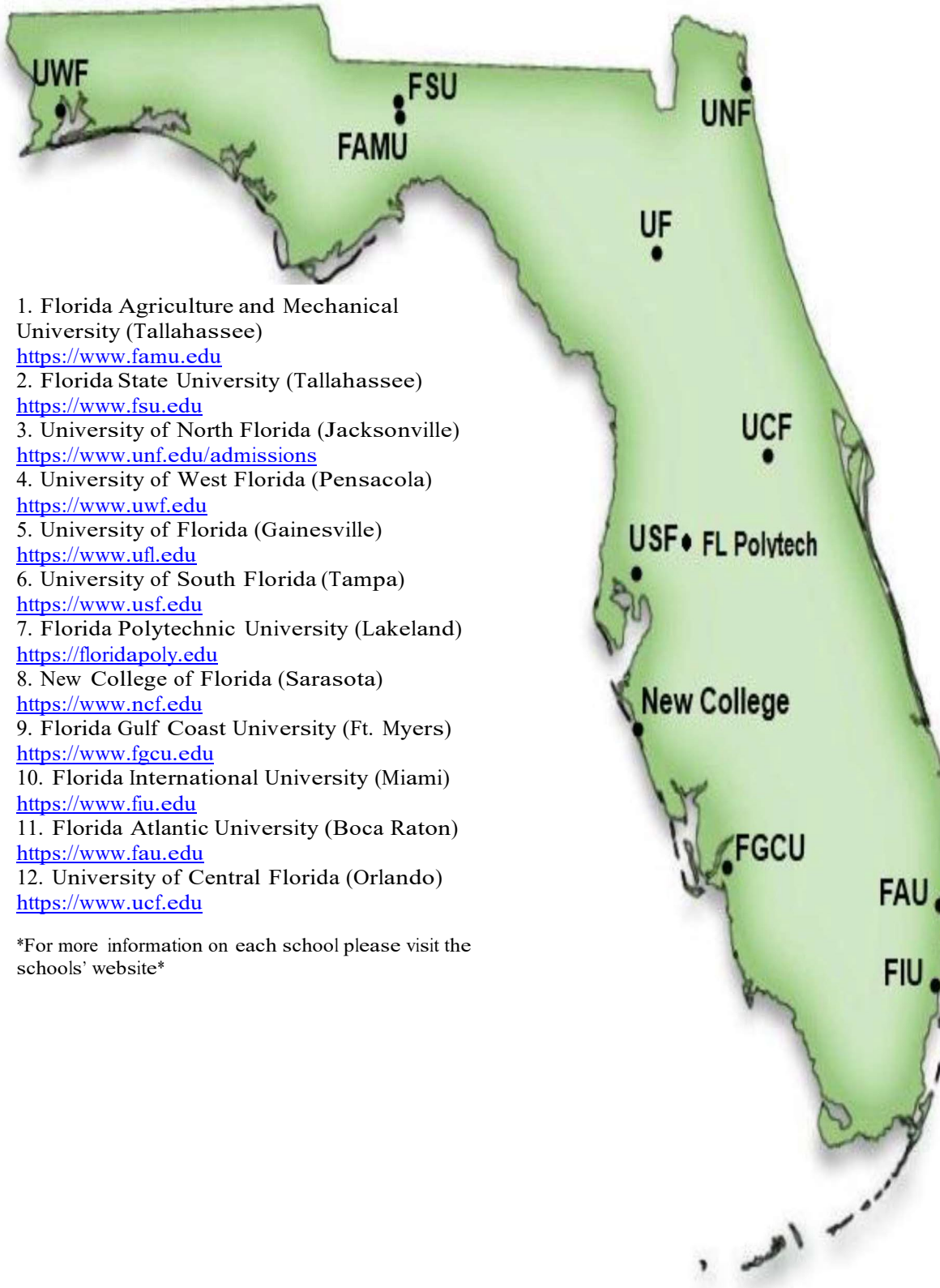
Many colleges will have institutional financial aid forms you must access and complete through each college's financial aid portal. Please check these one by one and make sure to complete all requirements.

## **Other Information:**

You will need to reapply for financial aid every year. If your family's financial situation changes, you will get more or less aid. You do not need to be accepted to college to apply for financial aid. However, to receive funds, you must be admitted and enrolled in college. After applying, you will get an award letter and have the opportunity to accept or deny any of the aid offered to you.

**Questions or problems with the FAFSA: Call 1-800-433-3243.**

# State University System Map



# Florida College System

## FCS Colleges

Broward College <a href="http://broward.edu">broward.edu</a>	Miami Dade College <a href="http://mdc.edu">mdc.edu</a>
Chipola College <a href="http://chipola.edu">chipola.edu</a>	North Florida Community College <a href="http://nfcc.edu">nfcc.edu</a>
College of Central Florida <a href="http://cf.edu">cf.edu</a>	Northwest Florida State College <a href="http://nwfsc.edu">nwfsc.edu</a>
Daytona State College <a href="http://daytonastate.edu">daytonastate.edu</a>	Palm Beach State College <a href="http://palmbeachstate.edu">palmbeachstate.edu</a>
Eastern Florida State College <a href="http://easternflorida.edu">easternflorida.edu</a>	Pasco-Hernando State College <a href="http://phsc.edu">phsc.edu</a>
Florida Gateway College <a href="http://fgc.edu">fgc.edu</a>	Pensacola State College <a href="http://pensacolastate.edu">pensacolastate.edu</a>
Florida Keys Community College <a href="http://fkcc.edu">fkcc.edu</a>	Polk State College <a href="http://polk.edu">polk.edu</a>
Florida State College at Jacksonville <a href="http://fscj.edu">fscj.edu</a>	St. Johns River State College <a href="http://sjrstate.edu">sjrstate.edu</a>
Florida Southwestern State College <a href="http://fsw.edu">fsw.edu</a>	St. Petersburg College <a href="http://spcollege.edu">spcollege.edu</a>
Gulf Coast State College <a href="http://gulfcoast.edu">gulfcoast.edu</a>	Santa Fe College <a href="http://sfcollege.edu">sfcollege.edu</a>
Hillsborough Community College <a href="http://hccfl.edu">hccfl.edu</a>	Seminole State College of Florida <a href="http://seminolestate.edu">seminolestate.edu</a>
Indian River State College <a href="http://irsc.edu">irsc.edu</a>	South Florida State College <a href="http://southflorida.edu">southflorida.edu</a>
Lake-Sumter State College <a href="http://lssc.edu">lssc.edu</a>	Tallahassee Community College <a href="http://tcc.fl.edu">tcc.fl.edu</a>
State College of Florida, Manatee-Sarasota <a href="http://scf.edu">scf.edu</a>	Valencia College <a href="http://valenciacollege.edu">valenciacollege.edu</a>

The career pathways depicted are aligned with the meta-major academic pathways identified in Rule 6A-14.065 that were established for the purposes of advising Florida College System associate degree seeking students of the gateway courses that are aligned with their intended academic and career goals.

Career Pathways concept and design by Broward College.





**THE Florida**  
COLLEGE SYSTEM

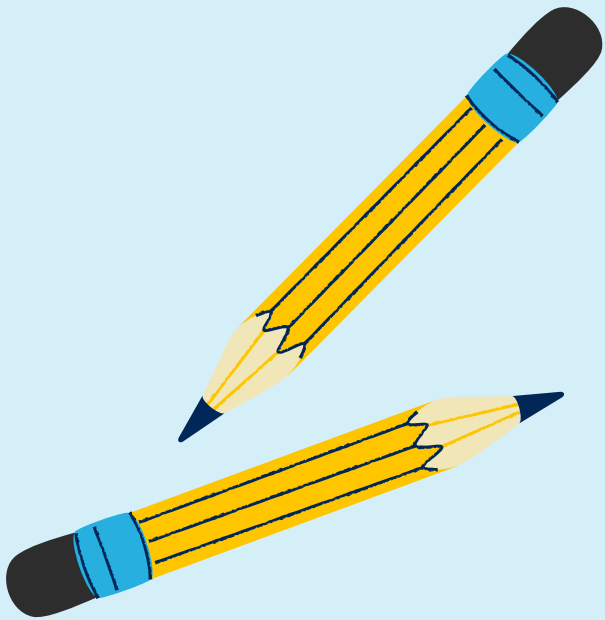


Take a **FREE**, online  
College Readiness course  
from Broward College

# Florida's Private Colleges & Universities

Adventist University of Health Sciences	<a href="http://www.adu.edu">www.adu.edu</a>	Orlando
Ave Maria University	<a href="http://www.avemaria.edu">www.avemaria.edu</a>	Ave Maria
Barry University	<a href="http://www.barry.edu">www.barry.edu</a>	Miami Shores
Beacon College	<a href="http://www.beaconcollege.edu">www.beaconcollege.edu</a>	Leesburg
Bethune Cookman University	<a href="http://www.cookman.edu">www.cookman.edu</a>	Daytona Beach
Eckerd College	<a href="http://www.eckerd.edu">www.eckerd.edu</a>	St. Petersburg
Edward Waters College	<a href="http://www.ewc.edu">www.ewc.edu</a>	Jacksonville
Embry Riddle Aeronautical University	<a href="http://www.erau.edu">www.erau.edu</a>	Daytona Beach
Everglades University	<a href="http://www.evergladesuniversity.edu">www.evergladesuniversity.edu</a>	Boca Raton
Flagler College	<a href="http://www.flagler.edu">www.flagler.edu</a>	St. Augustine
Florida College	<a href="http://www.floridacollege.edu">www.floridacollege.edu</a>	Temple Terrace
Florida Institute of Technology	<a href="http://www.fit.edu">www.fit.edu</a>	Melbourne
Florida Memorial University	<a href="http://www.fmuniv.edu">www.fmuniv.edu</a>	Miami
Florida Southern College	<a href="http://www.flsouthern.edu">www.flsouthern.edu</a>	Lakeland
Hodges University	<a href="http://www.hodges.edu">www.hodges.edu</a>	Naples
Jacksonville University	<a href="http://www.ju.edu">www.ju.edu</a>	Jacksonville
Johnson University	<a href="http://www.johnsonu.edu">www.johnsonu.edu</a>	Kissimmee
Johnson & Wales University	<a href="http://www.jwu.edu">www.jwu.edu</a>	North Miami
Keiser University	<a href="http://www.keiseruniversity.edu">www.keiseruniversity.edu</a>	Fort Lauderdale
Lynn University	<a href="http://www.lynn.edu">www.lynn.edu</a>	Boca Raton
Miami Int'l University of Art & Design	<a href="http://www.artsinstitutes.edu/miami">www.artsinstitutes.edu/miami</a>	Miami
Northwood University	<a href="http://www.northwood.edu">www.northwood.edu</a>	Tampa
Nova Southeastern University	<a href="http://www.nova.edu">www.nova.edu</a>	Fort Lauderdale
Palm Beach Atlantic College	<a href="http://www.pba.edu">www.pba.edu</a>	West Palm Beach
Ringling College of Art & Design	<a href="http://www.ringling.edu">www.ringling.edu</a>	Sarasota
Rollins College	<a href="http://www.rollins.edu">www.rollins.edu</a>	Winter Park
Southeastern University	<a href="http://www.seu.edu">www.seu.edu</a>	Lakeland
Saint Leo University	<a href="http://www.saintleo.edu">www.saintleo.edu</a>	Saint Leo
St. Thomas University	<a href="http://www.stu.edu">www.stu.edu</a>	St. Thomas
Stetson University	<a href="http://www.stetson.edu">www.stetson.edu</a>	Deland
University of Miami	<a href="http://www.miami.edu">www.miami.edu</a>	Coral Gables
University of Tampa	<a href="http://www.ut.edu">www.ut.edu</a>	Tampa
Warner Southern College	<a href="http://www.warner.edu">www.warner.edu</a>	Lake Wales
Webber International University	<a href="http://www.webber.edu">www.webber.edu</a>	Babson Park

# CAREER AND COLLEGE EXPLORATION



## WHAT IS XELLO?

Xello is a college and career exploration software. It hosts a wealth of information about careers, colleges, majors, and pathways.

## SCHOLARSHIPS

Xello includes a robust national and local scholarship search. Students are matched with scholarships based on their interests and profile. You can even track scholarships apps that you've completed in Xello!



## EXPLORE CAREERS

Students can take a variety of research-based self-assessments:

- Career Matchmaker
- Learning Style Assessment
- Skill Lab Assessment
- Personality Style Assessment

Explore your top careers today!

HOW DO I ACCESS MY XELLO ACCOUNT?

CLICK THE XELLO LOGO IN THE "HCPS HUB" IN CLEVER



## Adult and Career Services Center Student Services

**One-Stop Shop Promoting Education & Training Opportunities Bridging the Gap between Adult Education, Postsecondary, and the Workforce**

Educational career counseling and academic advising is available for free to assist students to enhance their knowledge and align resources to meet their education and career objectives. Financial aid assistance, grant and agency funding resources are available.

### Adult Education

**Eight Adult Administrative Sites in Hillsborough County:**  
Bowers/Whitley, Brandon, Chamberlain, Gary, Jefferson,  
Lennard, Leto, and Plant City

- ◆ Adult Basic Education
- ◆ High School Credit
- ◆ Florida High School Diploma (GED)
- ◆ English for Speakers of Other Language (ESOL)
- ◆ Academic Skills Building (ASB)

Career Pathways for the Adult Education student provides career development standards, digital literacy, and workforce preparation activities designed to be all Adult Education classes.

### Technical College Programs

**Four Technical College sites in Hillsborough County:** Aparicio-Levy, Brewster, Erwin, and Learey

- ◆ Apprenticeship
- ◆ Business & Marketing Management
- ◆ Early Childhood Education
- ◆ Health Science
- ◆ Hospitality and Tourism
- ◆ Industrial Trade and Manufacturing
- ◆ Information Technology
- ◆ Public Service

Career Pathways for the potential Technical College student provides support services to transition into postsecondary education, apprenticeship programs, and the workforce. Students learn to locate resources, navigate, organize, and plan for their educational and career goals.



Use QRC code to send Request for Information form to ACSC Student Services. An Adult Education Counselor/Advisor will contact you within 24 hours.

Please call and ask to speak with a Counselor for more information (813) 231-1907  
5410 N. 20th Street, Tampa, FL 33610 (Se habla Espanol)





# Program Offerings



**Effective for School Year 2024-2025**

Florida Department of Education (FLDOE) - 2024-2025 CTE Curriculum Frameworks

<https://origin.fldoe.org/academics/career-adult-edu/career-tech-edu/curriculum-frameworks/2024-25-frameworks>

<b>ALTC</b> APARICIO-LEVY TECHNICAL COLLEGE  hillsboroughschools.org/altc  813.740.4884	<b>BTC</b> BREWSTER TECHNICAL COLLEGE  hillsboroughschools.org/brewster  813.276.5448	<b>ETC</b> ERWIN TECHNICAL COLLEGE  hillsboroughschools.org/erwin  813.769.5180	<b>ACSC</b> Adult and Career Services Center  ACSC supports all our colleges 813.231.1907	<b>OFA</b> Office of Financial Aid  OFA supports all our colleges 813.231.1635
---	---	---	---	--

FLDOE Program Number	Program Title	Length of Study		Offered at HTC Campus		
		Instructional Clock Hours	Estimated months to complete	ALTC	BTC	ETC
Agribusiness						
A010512	Veterinary Assisting	750 hours	9 months	√		
Business and Marketing Management						
B070110	Accounting Operation	900 hours	10 months			√
Early Childhood						
E300100	Early Childhood Education	600 hours	Day & Eve Available		√	
Hospitality and Tourism						
N100520	Fundamental Foodservice Skills	600 hours	7 months			√
N100500	Professional Culinary Arts & Hospitality	1200 hours	14 months			√
N100600	Baking and Pastry Arts	600 hours	7 months			√
Human Services						
I120403	Barbering	900 hours	Evenings 19 months			√
D500100	Cosmetology	1200 hours	14 months			√
Information Technology						
Y100200	Computer Systems & Information Technology (CSIT)	900 hours	10 months	√		√
Y100400	Cloud Computing & Virtualization	900 hours	10 months			√
Y700100	Web Development	1050 hours	10 months		√	
Public Service						
P430211	Firefighter (Hillsborough County Fire)	492 + 40 hours	Eves + Sat 7 months	√		
P430211	Firefighter (Tampa Fire)	492 + 40 hours	Days 5 months	√		



FLDOE Program Number	Program Title	Length of Study		Offered at HTC Campus		
		Instructional Clock Hours	Estimated months to complete	ALTC	BTC	ETC
Apprenticeships						
Various	Building Trades	up to 4 years	Various			√
Health Science						
H170222	Central Sterile Processing Technology	650 hours	7 months		√	
H170113	Dental Assisting Technology and Management - (ATD)	1230 hours	12 months			√
W170212	Emergency Medical Technician - (ATD)	300 hours	Day & Eve 5 Months	√		
H120406	Massage Therapy	750 hours	9 months			√
H170515	Medical Assisting	1300 hours	15 months			√
H170600	Medical Clinical Laboratory Technician - (ATD)	1515 hours	15 months			√
H170529	Medical Coder/Biller	1110 hours	12 months			√
H170500	Pharmacy Technician	1050 hours	12 months		√	
H170302	Phlebotomy	165 hours	Day & Eve Available			√
H170607	Practical Nursing	1350 hours	15 months			√
H170211	Surgical Technology	1330 hours	15 months			√
Transportation, Industrial Trades, and Manufacturing Technology						
C400400	Heating, Ventilation, Air- Conditioning/Refrigeration (HVAC/R)	1350 hours	Day & Eve Available			√
I470608	Master Automotive Service Technology	1800 hours	21 months			√
T404700	Master Automotive Service Technology I	1050 hours	11 months		√	
T404100	Automotive Maintenance and Light Repair Technician	600 hours	Evenings 12 months	√		
C510300	Carpentry	1200 hours	14 months			√
C100200	Drafting	1500 hours	17 months			√
I460312	Electricity	1200 hours	14 months			√
T650100	Diesel Systems Technician 1	1050 hours	11 months		√	
C500500	Plumbing	1080 hours	11 months			√
X600400	Solar Photovoltaic System Design, Installation and Maintenance - Entry Level	600 hours	7 months			√
J400400	Welding Technology	1050 hours	Day & Eve Available			√



**Start Your Future - Today**  
**813.231.1907**  
 Career and Educational Counseling/Advising

*\*Subject to Change w/o notification*

Expires June 2025  
v.06.11.2024



# HCC INFORMATION



## Steps to apply to HCC:

1. Apply online at <https://www.hccfl.edu> during 2<sup>nd</sup> semester of your senior year. You need 2 proofs of residency when filling out the application (i.e. parent's driver's license information, parent's voter registration, or parent's vehicle registration).
2. Submit the FAFSA (Financial Aid) form online at <https://studentaid.gov/h/apply-for-aid/fafsa>.
3. Complete the Welcome Orientation
4. Go to HCC campus or schedule a phone call to meet with an advisor. Have SAT or ACT scores and a copy of your high school transcript with you. Students can also take the PERT test at HCC if you do not have SAT or ACT score. Visit <https://www.hccfl.edu/support-services/testing> for more information.
5. Register for classes (on campus or online)
6. Send final transcript to HCC at the end of your senior year.

---

Here are some of the programs available at Hillsborough Community College:

### Associate in Arts Degree

The Associate in Arts degree is designed for students who wish to transfer to a university. It is protected by the Articulation Agreement among all public Florida institutions of higher education. A student who is awarded an Associate in Arts degree by HCC has met the general education requirements for admission to the upper division of public universities.

### Associate in Science Degree

The Associate in Science degree is awarded to students who successfully complete one of the technical programs. These areas of study are designed primarily to prepare students for immediate employment.

Some program titles: Accounting & Business, Architecture & Building Trades, Communications, Counseling, Education, Engineering, Environment, Health & Medical, Hospitality & Culinary, Information Technology, Office Administration, Law & Public Safety, Transportation, Veterinary Technology, and Welding

### College Credit Certificate and Applied Technology Diploma

A College Credit Certificate is awarded for programs of less than 2 years in selected technical areas. Each of the certified programs is designed to prepare students for entry into a particular field, or to upgrade skills in the field. After completing a certificate program, many students continue studying their specific area and complete requirements for an Associate in Science degree.

# SCHOLARSHIP OPPORTUNITIES

**College is expensive. There's tuition, room and board, books, food...it all adds up fast!**  
**The following list provides information about where to find scholarships:**

- Check Canvas and Xello often or contact your school counselor for a copy of the scholarship matrix. The scholarship matrix can also be found on the district website.
- Participate in CollegeBoard's Big Future Scholarships program: <https://bigfuture.collegeboard.org/>
- Check college websites. Many universities offer merit scholarships. These are typically posted under "financial aid" or "scholarships." Check early: deadlines are typically during 1<sup>st</sup> semester.
- Check other scholarship search engines such as:  
**Xello** – Accessible through the "HCPS Hub" on Clever or Canvas!  
[www.scholarships360.org](http://www.scholarships360.org)  
[www.scholarships.com](http://www.scholarships.com)  
[www.cappex.com](http://www.cappex.com)
- **Hillsborough Education Foundation** offers many scholarships for Hillsborough County seniors. The application will open in October or November:  
<https://educationfoundation.com/linksforstudents/senior-scholarships/>
- Apply for **Bright Futures** starting **October 1<sup>st</sup>** of your senior year. You must submit the application before graduation. **You can apply before meeting all the requirements.**  
Directions: Go to [www.floridastudentfinancialaidsg.org](http://www.floridastudentfinancialaidsg.org). Click on the following links:  
"First Time Applicants"  
"Create a Student Account"  
Complete the required fields  
Click Submit  
SAVE the Username and Password automatically generated for you. You will use this to log back in and check on the status of your application once it has been submitted.  
Fill out the Florida Financial Aid Application (FFAA)
- **ROTC Scholarships** through various branches of the military. These scholarships can potentially be full tuition scholarships and have various test score and GPA requirements.
- Make sure to follow scholarship directions and be aware of deadlines. Type all parts of applications (essay, resume, etc.). Make copies and keep on file.

**Start your scholarship search EARLY!!**

# Websites to Know

## Entrance Exam Practice and Registration Sites:

[www.collegeboard.org](http://www.collegeboard.org) (PSAT, SAT, SAT Subject Tests)  
<https://www.khanacademy.org/digital-sat> (SAT)  
<https://www.act.org/content/act/en/products-and-services/the-act/test-preparation/free-act-test-prep.html>  
(ACT)  
[www.act.org](http://www.act.org) (ACT)  
[www.march2success.com](http://www.march2success.com)

## College Information Sites:

Xello (Access through HCPS Hub)  
<http://bigfuture.collegeboard.org>  
<https://www.imfirst.org/>

## Financial Aid Information Sites:

[www.fafsa.gov](http://www.fafsa.gov) Caution: Do Not Use! [www.fafsa.com](http://www.fafsa.com)  
[www.studentaid.gov](http://www.studentaid.gov)  
[www.floridastudentfinancialaidsg.org](http://www.floridastudentfinancialaidsg.org) (Bright Futures application)

## Scholarship Information Sites:

Xello (Access through HCPS Hub)  
[www.fastweb.com](http://www.fastweb.com)  
[www.scholarships.com](http://www.scholarships.com)  
[www.educationfoundation.com](http://www.educationfoundation.com)  
<https://www.raise.me/>

## Career Sites:

Xello (Access through HCPS Hub)  
[www.usajobs.com](http://www.usajobs.com)  
[www.jobcorp.com](http://www.jobcorp.com)  
[www.careerbuilder.com](http://www.careerbuilder.com)  
[www.monster.com](http://www.monster.com)

## Military Sites/ROTC Scholarship Information:

<https://www.airforce.com/>  
<https://www.army.mil/>  
<https://www.uscg.mil/>  
<https://www.navy.com/>  
<https://www.marines.mil/>  
<https://www.spaceforce.mil/>

## Scam Alert!

If you encounter one of these scenarios do not pursue that avenue for college assistance.

- ✓ The scholarship is guaranteed or your money back.
- ✓ Do NOT give your credit card information or bank account number to hold a scholarship EVER!
- ✓ You hear, “We will do all the work for you”.
- ✓ The scholarship costs money.
- ✓ Do not believe you were selected by a “National Foundation” to receive a scholarship or “You are a finalist in a contest” that you did not enter.
- ✓ You get an appointment time to see someone that you did not set.

# Division I Academic Standards

**Division I schools** require you to meet academic standards. To be eligible to practice, compete and receive an athletics scholarship in your first year of full-time enrollment, you must meet the following requirements:



DIVISION I

1. Earn 16 NCAA-approved core-course credits in the following areas:

ENGLISH	MATH (Algebra I or higher)	SCIENCE (Including one year of lab, if offered)	EXTRA (English, math or science)	SOCIAL SCIENCE	OTHER Any area listed to the left or courses listed in additional discipline (world language, comparative religion or philosophy)
4 years	3 years	2 years	1 year	2 years	4 years

2. Complete your 16 NCAA-approved core-course credits in eight academic semesters or four consecutive academic years from the start of ninth grade. If you graduate from high school early, you still must meet core-course requirements.
3. Complete 10 of your 16 NCAA-approved core-course credits, including seven in English, math or science, before the start of your seventh semester. Once you begin your seventh semester, any course needed to meet the 10/7 requirement cannot be replaced or repeated.
4. Earn a minimum 2.3 **core-course GPA**.
5. Ask your high school counselor to upload your **final official transcript** with proof of graduation to your Eligibility Center account.

## EARLY ACADEMIC QUALIFIER

If you meet **specific criteria** after six semesters of high school, you may be deemed an early academic qualifier for Division I and may practice, compete and receive an athletics scholarship during your first year of full-time enrollment.

## QUALIFIER

You may practice, compete and receive an athletics scholarship during your first year of full-time enrollment.

## ACADEMIC REDSHIRT

You may practice during your first regular academic term and receive an athletics scholarship during your first year of full-time enrollment but may NOT compete during your first year of full-time enrollment. You must pass either eight quarter or nine semester hours to practice in the next term.

## NONQUALIFIER

You will not be able to practice, compete or receive an athletics scholarship during your first year of full-time enrollment.



ELIGIBILITY CENTER



GRADE  
**9**  
REGISTER

- » If you haven't yet, **register** for a free Profile Page account at [eligibilitycenter.org](https://eligibilitycenter.org) for information on NCAA initial-eligibility requirements.
- » Use NCAA Research's **interactive map** to help locate NCAA schools you're interested in attending.
- » Find your high school's list of NCAA-approved core courses at [eligibilitycenter.org/courselist](https://eligibilitycenter.org/courselist) to ensure you're taking the right courses, and earn the best grades possible!

GRADE  
**10**  
PLAN

- » If you're being actively recruited by an NCAA school and have a Profile Page account, **transition** it to the required **certification account**.
- » Monitor the **task list** in your NCAA Eligibility Center account for next steps.
- » At the end of the school year, ask your high school counselor from each school you attend to upload an official transcript to your Eligibility Center account.
- » If you fall behind academically, ask your high school counselor for help finding **approved courses** you can take.

GRADE  
**11**  
STUDY

- » Ensure your **sports participation** information is correct in your Eligibility Center account.
- » Check with your high school counselor to make sure you're on track to complete the required number of NCAA-approved **core courses** and graduate on time with your class.
- » Share your **NCAA ID** with NCAA schools recruiting you so each school can place you on its **institutional request list**.
- » At the end of the school year, ask your high school counselor from each school you attend to upload an official transcript to your Eligibility Center account.

GRADE  
**12**  
GRADUATE

- » **Request your final amateurism certification** beginning April 1 (fall enrollees) or Oct. 1 (winter/spring enrollees) in your Eligibility Center account at [eligibilitycenter.org](https://eligibilitycenter.org).
- » Apply and be accepted to the NCAA school you plan to attend.
- » Complete your final NCAA-approved **core courses** as you prepare for graduation.
- » After you graduate, ask your high school counselor to upload your final **official transcript** with proof of graduation to your Eligibility Center account.

How to plan your high school courses to meet the 16 core-course requirement:

$$4 \times 4 = 16$$

**9<sup>th</sup>**  
GRADE

(1) English  
(1) Math  
(1) Science  
(1) Social Science  
and/or other

**4 CORE COURSES**

**10<sup>th</sup>**  
GRADE

(1) English  
(1) Math  
(1) Science  
(1) Social Science  
and/or other

**4 CORE COURSES**

**11<sup>th</sup>**  
GRADE

(1) English  
(1) Math  
(1) Science  
(1) Social Science  
and/or other

**4 CORE COURSES**

**12<sup>th</sup>**  
GRADE

(1) English  
(1) Math  
(1) Science  
(1) Social Science  
and/or other

**4 CORE COURSES**

**CONTACT THE NCAA ELIGIBILITY CENTER**

U.S. and Canada (except Quebec):  
877-262-1492 (toll free), Monday-Friday  
9 a.m. to 5 p.m. Eastern time  
International (including Quebec):  
[on.ncaa.com/IntlContact](https://on.ncaa.com/IntlContact)



[@ncaaec](https://twitter.com/ncaaec) [@ncaaec](https://www.youtube.com/channel/UCncaaec) [@ncaaec](https://www.facebook.com/ncaaec) [@playcollegesports](https://www.instagram.com/playcollegesports)



ELIGIBILITY CENTER

# Division II Academic Standards

**Division II schools** require you to meet academic standards. To be eligible to practice, compete and receive an athletics scholarship in your first year of full-time enrollment, you must meet the following requirements:

1. Earn 16 NCAA-approved core-course credits in the following areas:

ENGLISH	MATH (Algebra I or higher)	SCIENCE (Including one year of lab, if offered)	EXTRA (English, math or science)	SOCIAL SCIENCE	OTHER Any area listed to the left or courses listed in additional discipline (world language, comparative religion or philosophy)
3 years	2 years	2 years	3 years	2 years	4 years

2. Earn a minimum 2.2 **core-course GPA**.
3. Ask your high school counselor to upload your **final official transcript** with proof of graduation to your Eligibility Center account.

## EARLY ACADEMIC QUALIFIER

If you meet **specific criteria** after six semesters of high school, you may be deemed an early academic qualifier for Division II and may practice, compete and receive an athletics scholarship during your first year of full-time enrollment.

## QUALIFIER

You may practice, compete and receive an athletics scholarship during your first year of full-time enrollment.

## PARTIAL QUALIFIER

You may practice and receive an athletics scholarship but may NOT compete during your first year of full-time enrollment.



DIVISION II

**MAKE IT YOURS**





GRADE  
**9**  
REGISTER

- » If you haven't yet, **register** for a free Profile Page account at [eligibilitycenter.org](https://eligibilitycenter.org) for information on NCAA initial-eligibility requirements.
- » Use NCAA Research's **interactive map** to help locate NCAA schools you're interested in attending.
- » Find your high school's list of NCAA-approved core courses at [eligibilitycenter.org/courselist](https://eligibilitycenter.org/courselist) to ensure you're taking the right courses, and earn the best grades possible!

GRADE  
**10**  
PLAN

- » If you're being actively recruited by an NCAA school and have a Profile Page account, **transition** it to the required **certification account**.
- » Monitor the **task list** in your NCAA Eligibility Center account for next steps.
- » At the end of the school year, ask your high school counselor from each school you attend to upload an official transcript to your Eligibility Center account.
- » If you fall behind academically, ask your high school counselor for help finding **approved courses** you can take.

GRADE  
**11**  
STUDY

- » Ensure your **sports participation** information is correct in your Eligibility Center account.
- » Check with your high school counselor to make sure you're on track to complete the required number of NCAA-approved **core courses**.
- » Share your **NCAA ID** with NCAA schools recruiting you so each school can place you on its **institutional request list**.
- » At the end of the school year, ask your high school counselor from each school you attend to upload an official transcript to your Eligibility Center account.

GRADE  
**12**  
GRADUATE

- » **Request your final amateurism certification** beginning April 1 (fall enrollees) or Oct. 1 (winter/spring enrollees) in your Eligibility Center account at [eligibilitycenter.org](https://eligibilitycenter.org).
- » Apply and be accepted to the NCAA school you plan to attend.
- » Complete your final NCAA-approved **core courses** as you prepare for graduation.
- » After you graduate, ask your high school counselor to upload your final **official transcript** with proof of graduation to your Eligibility Center account.

How to plan your high school courses to meet the 16 core-course requirement:

$$4 \times 4 = 16$$

**9<sup>th</sup>** GRADE

(1) English  
(1) Math  
(1) Science  
(1) Social Science and/or other

**4 CORE COURSES**

**10<sup>th</sup>** GRADE

(1) English  
(1) Math  
(1) Science  
(1) Social Science and/or other

**4 CORE COURSES**

**11<sup>th</sup>** GRADE

(1) English  
(1) Math  
(1) Science  
(1) Social Science and/or other

**4 CORE COURSES**

**12<sup>th</sup>** GRADE

(1) English  
(1) Math  
(1) Science  
(1) Social Science and/or other

**4 CORE COURSES**

**CONTACT THE NCAA ELIGIBILITY CENTER**

U.S. and Canada (except Quebec):  
877-262-1492 (toll free), Monday-Friday  
9 a.m. to 5 p.m. Eastern time  
International (including Quebec):  
[on.ncaa.com/IntlContact](https://on.ncaa.com/IntlContact)



[@ncaaec](https://twitter.com/ncaaec) [@ncaaec](https://www.youtube.com/channel/UCncaaec) [@ncaaec](https://www.facebook.com/ncaaec) [@playcollegesports](https://www.instagram.com/playcollegesports)



ELIGIBILITY CENTER

# NAIA Information

## NAIA Eligibility Center at PlayNAIA.org determines eligibility of all first-time NAIA student-athletes

The NAIA Eligibility Center, at [PlayNAIA.org](http://PlayNAIA.org), is responsible for determining the NAIA eligibility of first-time student-athletes. Students must receive an eligible decision by the NAIA Eligibility Center prior to competing for the first-time in the NAIA, and all NAIA schools are bound by the center's decisions.

Every student interested in playing sports at NAIA colleges for the first time needs to register online with the NAIA Eligibility Center and receive an eligible determination. This applies to high school seniors and transfers from both two- and four-year colleges.

What information will I need to provide? You'll create a personal profile with the basic facts about your academic history and sports participation to date.

- You'll need your current contact information, previous residences and addresses, high schools attended and history of your sports participation during and after high school graduation.
- **9876** When you register for the ACT or SAT, include the NAIA Eligibility Center (9876) on the list of places test scores should be sent.
- Ask your high school counselors to send a final, official transcript that verifies high school graduation, class rank and cumulative grade point average to the eligibility center through the NAIA High School Portal.

## What are the costs?

Registration costs for students are as follows:

- US/Canada high school: \$100
- International: \$160
- US/Canadian freshman break: \$135
- US/Canadian break: \$150



This is a one-time, nonrefundable registration fee and includes all services for the student type. Additional fees may be assessed if your student type changes.

The registration fee will be waived for U.S. students with demonstrated need. If you received a fee waiver for the ACT or SAT test or received federal free or reduced-cost lunch program, contact your high school counselor, who can provide confirmation of your eligibility for a fee waiver to the NAIA Eligibility Center. Fee waiver confirmations are required to be completed by high school counselors through the online [NAIA High School Portal](http://NAIA High School Portal) regardless of when you graduated high school.

## Do I meet the freshman eligibility requirements?

If you will graduate from a U.S. high school this spring and enroll in college this coming fall, the requirements are simple. An entering freshman must:

- Be a graduate of an accredited high school.
- Must graduate with a 2.3+ GPA or meet two of the three following requirements.

### MUST MEET TWO OF THE THREE

1. TEST SCORE REQUIREMENT	2. HIGH SCHOOL GPA REQUIREMENT	3. CLASS RANK REQUIREMENT
<b>Achieve a minimum of 18 on the ACT or 970 on the SAT</b>	<b>Achieve a minimum overall high school grade point average of 2.0 on a 4.0 scale</b>	<b>Graduate in the top half of your high school class</b>
Tests must be taken on an international testing date prior to the start of the term in which you intend to participate in athletics and scores must be achieved on a single test date. The minimum SAT must be achieved on the Evidence-Based Reading & Writing and Math sections only; the Writing score cannot be used.  Minimum score requirements for tests taken prior to May 1, 2019 varied. <ul style="list-style-type: none"> <li>• For tests taken prior to March 1, 2016: 18 ACT, 860 SAT (reading, math)</li> <li>• For tests taken between March 1, 2016 and May 1, 2019: 16 ACT, 860 SAT (evidence-based reading &amp; writing, math)</li> </ul>	The NAIA accepts the grade point average determined by the high school, provided it is recorded and awarded in the same manner as for every other student at the school.	If a student's class rank does not appear on the transcript, a signed letter from the principal or headmaster, vice principal or guidance counselor written on the school's letterhead and with the school's official seal, stating the student's final class rank position or percent may be submitted.  <b>Exception:</b> Completion of nine institutional credit hours prior to identification at any institution of higher education can be used if no class rank appears on the final official high school transcript. The credit hours must be completed with a grade of "C" or better.

**Mid-Year Eligibility Opportunity.** If you do not meet requirements for an entering freshman, you can satisfy one of the initial requirements in addition to earning 12 institutional credits hours with a grade of "C" or better during your first term of attendance at your NAIA school to be eligible.